

Marion Power Plant – Emery Pond

# **2019 Annual Groundwater Monitoring and Corrective Action Report**

Marion Power Plant  
Southern Illinois Power Cooperative  
Marion, Williamson County, Illinois



**Table of Contents**

**1. Introduction** ..... 2

**2. 2019 Activities Summary**..... 2

    2.1 Groundwater Flow..... 3

    2.2 Sampling Results ..... 3

    2.3 Problems Encountered and Resolutions..... 3

**3. Actions Planned for 2020** ..... 3

**4. References** ..... 4

**Appendices**

- Appendix A Analytical Results
- Appendix B Potentiometric Surface Maps

**Figures and Tables**

**Figures**

Figure 1. Site Map ..... 5

**Tables**

Table 1. Groundwater Depths and Elevations ..... 3

Table 2. Groundwater Sample Collection for First Semi-Annual Event in 2020 ..... 3

**Acronyms and Abbreviations**

CCR	Coal Combustion Residuals
CFR	Code of Federal Regulations
DTW	Depth to Water (from measuring point)
Elev.	Elevation (in North American Vertical Datum 1988)
GPS	Groundwater Protection Standard
Hanson	Hanson Professional Services Inc.
MCL	Maximum Contaminant Level
Plant	Marion Power Plant
SIPC	Southern Illinois Power Cooperative
SSI	Statistically Significant Increase
USEPA	United States Environmental Protection Agency

*Copyright © 2020 by Hanson Professional Services Inc. All rights reserved. This document is intended solely for the individual or the entity to which it is addressed. The information contained in this document shall not be duplicated, stored electronically, or distributed, in whole or in part, by anyone other than the recipient without the express written permission of Hanson Professional Services Inc., 1525 S. Sixth St., Springfield, IL 62703, (217) 788-2450, www.hanson-inc.com. Unauthorized reproduction or transmission of any part of this document is a violation of federal law. Any concepts, designs and project approaches contained herein are considered proprietary. Any use of these concepts and approaches by others is considered a violation of copyright law.*

## 1. Introduction

Hanson prepared this groundwater monitoring and corrective action plan report for the Southern Illinois Power Cooperative Marion Power Plant. This report was prepared in accordance with the “Standards for the Disposal of Coal Combustion Residuals in Landfills and Surface Impoundments” Title 40 CFR, Part 257, aka “the Rule”. The Rule regulates the disposal of CCR produced by electric generating facilities.

The Marion Plant is situated on the northwestern shoreline of Lake of Egypt, south of Marion, Illinois in Williamson County. The Marion Plant has been in operation since 1963, and utilizes Lake of Egypt for cooling and other fresh water needs. The Emery Pond is an on-site settling pond, approximately one (1) acre in size that is subject to the Rule. Precipitator, air heater, boiler and scrubber CCR material is intermittently managed in the pond.

This report summarizes the activities related to the Rule during 2019. In accordance with the Rule, the owner or operator of an existing CCR unit must prepare an annual groundwater monitoring and corrective action report for the preceding calendar year. The report summarizes activities completed, any problems encountered, discusses corrective actions to the problems and discusses activities for the upcoming year. At a minimum, the report should contain the following information, to the extent available:

- A map, aerial image or diagram showing the CCR unit and all background (or upgradient) and downgradient monitoring wells, to include the well identification numbers that are part of the groundwater monitoring program for the CCR unit.
- Identification of any monitoring wells that were installed or decommissioned during the preceding year, along with a narrative description of why those actions were taken.
- In addition to all the monitoring data obtained under 40 CFR 257.90 through 257.98, a summary including the number of groundwater samples that were collected for analysis at each background and downgradient well, the dates the samples were collected, and whether the sample was required by the detection monitoring or assessment monitoring programs.
- A narrative discussion of any transition between monitoring programs (e.g., the date and circumstances for transitioning from detection monitoring to assessment monitoring in addition to identifying the constituent(s) detected at an SSI over background levels).
- Other information required to be included in the annual report as specified in 40 CFR 257.90 through 257.98.

## 2. 2019 Activities Summary

The Emery Pond has five groundwater monitoring wells (AECOM, 2017). One upgradient (background) well, EBG, and four detection monitoring wells, EP-1, EP-2, EP-3, and EP-4 (see Figure 1). No modifications to the existing monitoring program were performed and no needed changes were identified.

Assessment Monitoring continued at Emery Pond in 2019 for the SSIs identified in 2018 (Hanson, 2019).

## 2.1 Groundwater Flow

Depth to water measurements were taken prior to collecting a sample at each well. A potentiometric surface map was created to confirm groundwater flow direction. A summary of groundwater measured elevations is included in Table 1 and groundwater flow maps for each event are included in Appendix B.

**Table 1. Groundwater Depths and Elevations**

Sample Event   Well ID	EBG	EP-1	EP-2	EP-3	EP-4
January 11, 2019 DTW	8.1	6.0	5.0	17.2	11.5
January 11, 2019 Elev.	516.77	513.72	508.79	501.75	508.24
June 27, 2019 DTW	7.3	5.7	6.0	15.6	9.0
June 27, 2019 Elev.	517.57	514.02	507.79	503.35	510.74

Generally, groundwater flow is in a northeasterly direction for the two 2019 sampling events.

## 2.2 Sampling Results

Previously, a notice of assessment monitoring was placed in the operating record on August 8, 2018 (SIPC, 2018) due to the SSIs identified at that time. For 2019, the results of the first semi-annual sampling event continued to show several SSIs in the downgradient monitoring wells (see gray highlights for the January 11 sampling event in the Analytical Results Table in Appendix A).

Assessment Monitoring samples (40 CFR 257, Appendix III and Appendix IV) were collected on June 27, 2019. The 40 CFR 257 Appendix III samples continued to show the SSIs observed in the January 2019 sampling event. The 40 CFR 257, Appendix IV parameters were exceeded at two monitoring wells. EP-3 exceeded background for total Arsenic and background and GPS for total Cobalt, and EP-4 exceeded background and GPSs for total Arsenic and total Cobalt.

## 2.3 Problems Encountered and Resolutions

No additional problems were encountered during the 2019 reporting period.

## 3. Actions Planned for 2020

SIPC will continue to conduct Detection Monitoring sampling during the first semi-annual event in 2020 and add the parameters that exceeded the GPS during the 2019 Assessment Monitoring event. The samples that will be collected and analyzed for are listed in Table 2.

**Table 2. Groundwater Sample Collection for First Semi-Annual Event in 2020**

Parameter   Well ID	EBG	EP-1	EP-2	EP-3	EP-4
Appendix III parameters	x	x	x	x	x
Arsenic, total				x	x
Cobalt, total				x	x

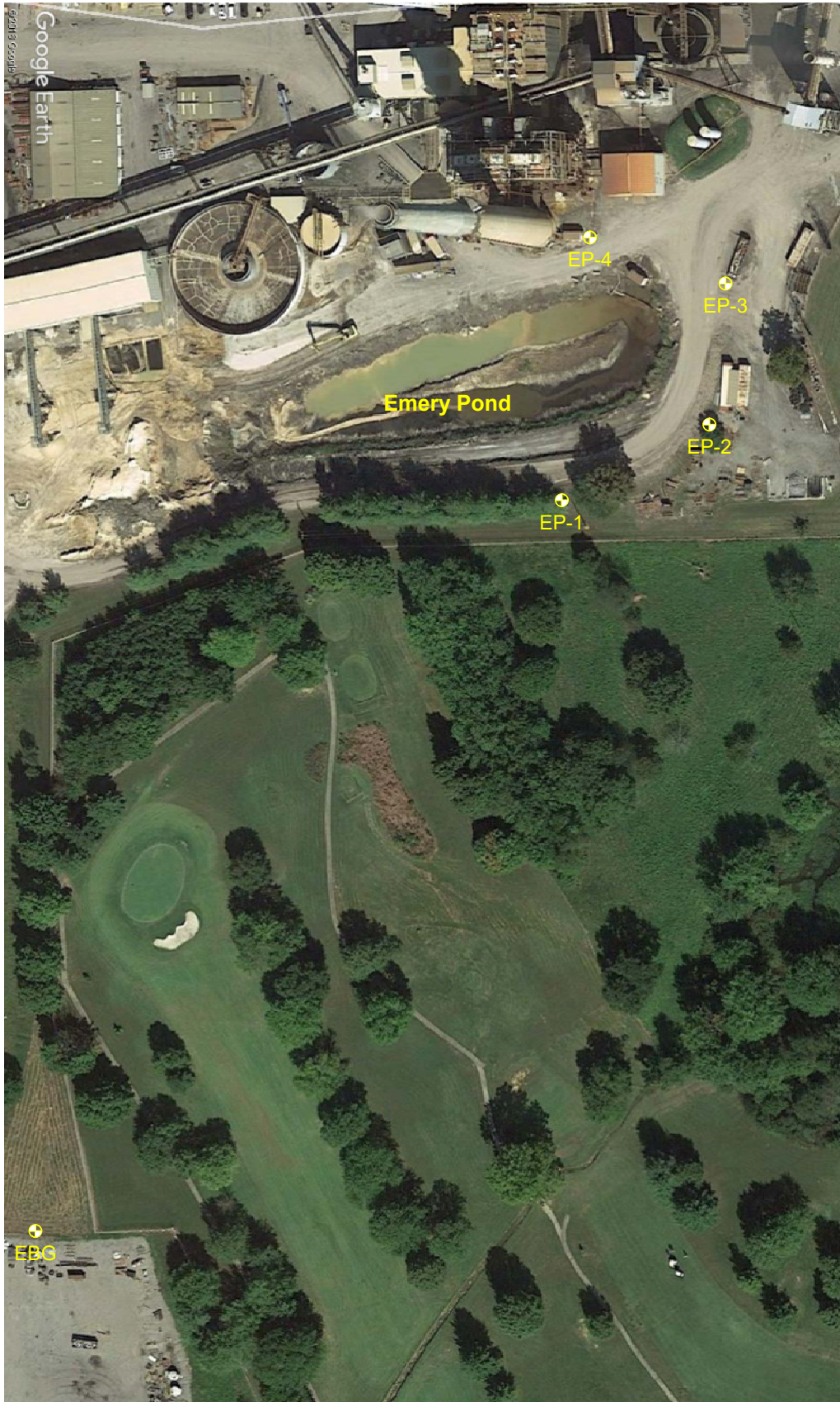
The second semi-annual event will have samples collected for both Appendix III and Appendix IV lists at the five (5) monitoring wells.

#### 4. References

AECOM, 2017. "Draft Monitoring Well Installation Report Coal Combustion Residuals (CCR) Rule", Marion Power Plant. September 28, 2017.

Hanson, 2019. "2018 Annual Groundwater Monitoring and Corrective Action Report", Hanson Professional Services Inc., Springfield, IL. January 25, 2019.

SIPC, 2018. "Assessment Monitoring Program Notification – Emery Pond Monitoring Wells", Southern Illinois Power Cooperative, Marion, IL. 1 p.



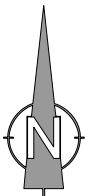
SCALE: 1 in. = 135 ft.



Explanation

- Monitoring Well
- EP-1

Copyright Hanson Professional Services Inc., 2020



SITE MAP

2019 ANNUAL GROUNDWATER REPORT  
 EMERY POND – MARION POWER PLANT  
 MARION, WILLIAMSON COUNTY, ILLINOIS

HANSON NO. 20E0006

FIGURE 1

## Appendix A

### Analytical Results



**Appendix A. Analytical Results Table for 2019  
SIPC Marion Power Plant – Emery Pond**

Sampling Date				1/11/2019					6/27/2019				
Reporting Date				6/4/2019					7/30/2019				
PARAMETER NAME	UNITS	Bkgd. Std.	GPS	EBG	EP-1	EP-2	EP-3	EP-4	EBG	EP-1	EP-2	EP-3	EP-4
<b>Detection Monitoring List (App. III)</b>													
Boron	mg/L	0.1216	0.1216	0.041	0.73	0.35	<0.1	12.	<0.04	1.12	0.274	<0.04	11.5
Calcium	mg/L	46.304	46.304	13.	390.	280.	62.	140.	15.2	444.	236.	76.3	159.
Chloride	mg/L	118.63	118.63	12.	70.	25.	160.	420.	18.	55.	29.	150.	440.
Fluoride	mg/L	0.64	4.	<0.5	<0.5	<0.5	<0.5	<0.5	<0.06	<0.06	<0.06	<3.	<0.06
pH	SU	6.11 - 6.94	6.11 - 6.94	6.85	6.33	6.62	6.11	6.07	6.21	6.2	6.18	5.98	5.86
Sulfate	mg/L	68.606	68.606	74.	1600.	1100.	220.	740.	77.	1500.	1100.	160.	710.
Temperature	deg C	n/a	n/a	8.9	13.9	13.5	17.2	16.	19.8	16.6	18.7	19.6	19.4
Total Dissolved Solids	mg/L	550.58	550.58	350.	2800.	1900.	1300.	2000.	470.	550.	400.	580.	130.
<b>Assessment Monitoring List (App. IV)</b>													
Antimony	ug/L	5.	6.	◆	◆	◆	◆	◆	<1.6	<1.6	<1.6	<1.6	<1.6
Arsenic	ug/L	5.	10.	1.2	<5.	<1.	6.8	14.	<2.	<2.	<2.	5.7	26.
Barium	ug/L	249.13	2000.	64.	<10.	<10.	36.	24.	<0.11	<0.11	<0.11	<0.11	<0.11
Beryllium	ug/L	5.	5.	◆	◆	◆	◆	◆	<0.15	<0.15	<0.15	<0.15	<0.15
Cadmium	ug/L	10.	10.	◆	◆	◆	◆	◆	<0.018	<0.018	<0.018	<0.018	<0.018
Chromium	ug/L	10.	100.	◆	◆	◆	◆	◆	<0.14	<0.14	<0.14	<0.14	<0.14
Cobalt	ug/L	19.0812	19.0812	3.8	0.37	0.48	63.	390.	<0.63	<0.63	<0.63	32.	280.
Lead	ug/L	10.	15.	◆	◆	◆	◆	◆	<0.16	<0.16	<0.16	<0.16	<0.16
Lithium	ug/L	100.	100.	◆	◆	◆	◆	◆	<0.04	<0.04	<0.04	0.119	<0.04
Mercury	ug/L	0.2	2.	<0.2	<0.2	<0.2	<0.2	<0.2	<0.1	<0.1	<0.1	<0.1	<0.1
Molybdenum	ug/L	5.	100.	◆	◆	◆	◆	◆	<0.28	<0.28	<0.28	<0.28	<0.28
Radium 226	pCi/L	1.2076	n/a	◆	◆	◆	◆	◆	0.703	0.619	-0.149	0.0839	0.77
Radium 226 Uncertainty	pCi/L	n/a	n/a	◆	◆	◆	◆	◆	0.29	0.292	0.231	0.145	0.423
Radium 228	pCi/L	2.9745	n/a	◆	◆	◆	◆	◆	0.911	0.0905	0.553	0.477	0.929
Radium 228 Uncertainty	pCi/L	n/a	n/a	◆	◆	◆	◆	◆	0.429	0.334	0.385	0.297	0.353
Radium 226 + Radium 228	pCi/L	4.0038	5.	◆	◆	◆	◆	◆	1.614	0.7095	0.404	0.5609	1.699
Selenium	ug/L	7.	50.	0.68	<5.	6.	0.72	<5.	<0.33	<0.33	<0.33	<0.33	<0.33
Thallium	ug/L	50.	50.	<50.	<50.	<50.	<50.	97.	<0.15	<0.15	<0.15	<0.15	<0.15

Upgradient monitoring well =	<b>EBG</b>
Detection monitoring well =	<b>EP-3</b>
Background GW Quality Standard =	<b>5.</b>
Concentration above Background =	<b>140.</b>
Concentration above GPS =	<b>140.</b>
pH value within meter accuracy of ±0.1 SU =	<b>6.1</b>
Not required per 40 CFR 257.95(d)(1) =	<b>◆</b>

**Groundwater Protection Standards (GPS):**

MCL from 40 CFR 141.61 and .66 =	<b>10.</b>
MCL from July 30, 2018 rulemaking =	<b>40.</b>
Background concentration per 257.95(h)(3) =	<b>10.</b>




## Appendix B

### Potentiometric Surface Maps





©Hanson Professional Services Inc., 2020



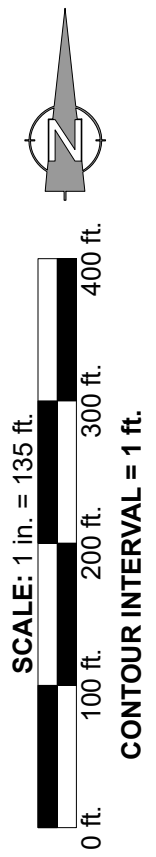
**HANSON**  
Hanson Professional Services Inc.

**POTENTIOMETRIC SURFACE MAP**

2019 ANNUAL GROUNDWATER REPORT  
EMERY POND - MARION POWER PLANT  
MARION, WILLIAMSON COUNTY, ILLINOIS

FIGURE NO. B-1

HANSON NO. 20E0006







©Hanson Professional Services Inc., 2020

**POTENTIOMETRIC SURFACE MAP**

2019 ANNUAL GROUNDWATER REPORT  
 EMERY POND - MARION POWER PLANT  
 MARION, WILLIAMSON COUNTY, ILLINOIS

HANSON NO. 20E0006

FIGURE NO. B-2

