

**EMERGENCY ACTION PLAN**

FOR

**COAL CUMBUSTION RESIDUAL  
SURFACE IMPOUNDMENT  
EMERY POND**

**APRIL 17, 2017**

PREPARED FOR

**SOUTHERN ILLINOIS POWER COOPERATIVE**

PREPARED BY

**CLARIDA & ZIEGLER ENGINEERING CO.  
410 NORTH COURT STREET  
MARION, ILLINOIS**

PROJECT 16136

**EMERGENCY ACTION PLAN  
FOR  
SOUTHERN ILLNOIS POWER COOPERATIVE**

1. BACKGROUND .....	1
2. SAFETY EMERGENCY .....	1
3. RESPONSIBLE PERSONS .....	1
4. EMERGENCY RESPONDERS .....	2
LOCAL AGENCIES: .....	2
STATE AGENCIES: .....	2
FEDERAL AGENCIES: .....	2
5. MAP .....	2
6. ANNUAL MEETINGS .....	2

## **1. BACKGROUND**

The Emery Pond is approximately 30-35 years old and is located on the south side of the power plant facility. The pond contains some ash from boiler wash downs and wash downs of other equipment in the event of outages. One primary electric pump and one back up diesel pump are used to pump the contents of the Emery Pond to the plant's south fly ash pond. Because of the possible harm to Lake of Egypt in the event of failure or misoperation, the Emery Pond has been classified as a significant hazard potential CCR surface impoundment. As such, section 257.73(a)(3) of the Federal Register, Vol. 80, No. 74 dictates that the Emery Pond must have an Emergency Action Plan.

## **2. SAFETY EMERGENCY**

A safety emergency would be represented by failure to both the primary electric pump and the backup diesel pump and a subsequent rise of the water level of the Emery Pond being high enough to flow into Lake of Egypt. Daily monitoring of the pumps and the Emery Pond by the Southern Illinois Power Cooperative staff will allow for detection of a safety emergency.

## **3. RESPONSIBLE PERSONS**

In the event of a safety emergency, the situation shall be immediately reported to the Vice President of Environmental & Fuels. The Vice President of Environmental & Fuels shall then immediately notify the appropriate emergency responders, as well as report the safety emergency to the various Local, State, and Federal Government Offices. Below is a list of the Southern Illinois Power Cooperative Supervisory Office.

Leonard F. Hopkins	Dam Safety Officer	(618)964-2268 (618)937-3317 (618)922-9311
Don Gulley	President & CEO	(618)964-2202
Todd Gallenbach	Vice Pres. Power Production	(618)964-2240
Bill Hutchison	Vice Pres. Electrical Systems Dept.	(618)964-2207
Stephanie Oxford	Vice Pres. Administration & Finance	(618)964-2230
Leonard F. Hopkins	Vice Pres. Environmental & Fuels	(618)964-2268
Other Department Managers		(618)964-1448

**4. EMERGENCY RESPONDERS**

## LOCAL AGENCIES:

Williamson County Emergency Management Agency	(618)993-2323
Williamson County Sheriff	(618)997-6541

## STATE AGENCIES:

Illinois Emergency Management Agency	(618)997-2123
--------------------------------------	---------------

## FEDERAL AGENCIES:

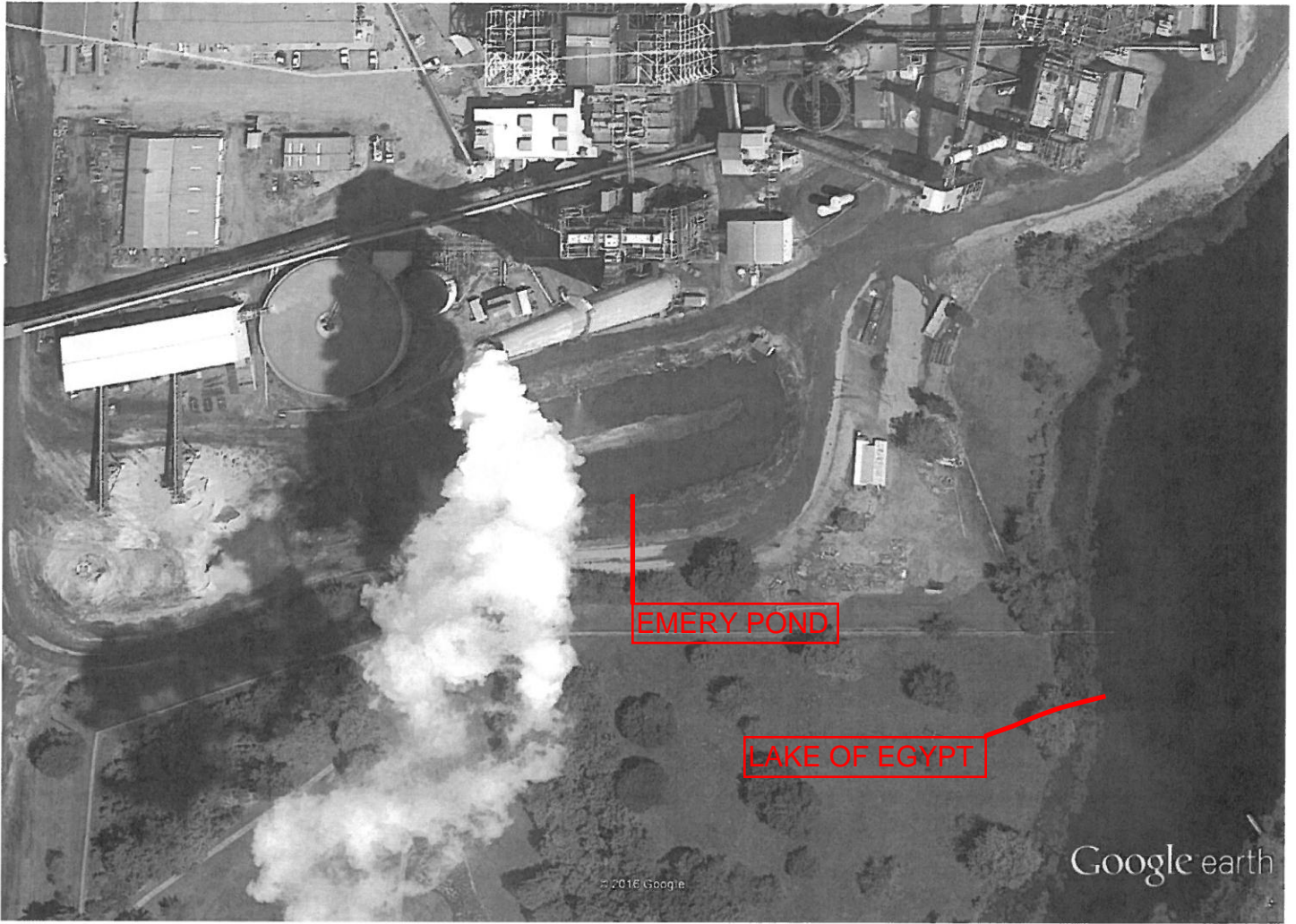
National Weather Service	(314)946-7610
Corps of Engineers St. Louis, MO	(314)263-5703
U.S. EPA Chicago, IL	(Bus. hours) (708)353-2102
	(after hours) (708)353-2318

**5. MAP**

Please see the attached exhibit for a display of the area that would be affected by failure or misoperation of the Emery Pond.

**6. ANNUAL MEETINGS**

To ensure the effectiveness of this EAP, Representatives of Southern Illinois Power Cooperative shall hold annual face-to-face meetings with local emergency responders.



Google earth

